



MightyMite<sup>®</sup>  
COMPLETE PEDIATRIC  
ENDOSKELETAL SOLUTION

## Tiny Titan™ Suspension Sleeves



A.	194100	Pediatric Suspension Sleeve	XS	Tan
	194101	Pediatric Suspension Sleeve	S	Tan
	194102	Pediatric Suspension Sleeve	M	Tan
	194103	Pediatric Suspension Sleeve	L	Tan
	194104	Pediatric Suspension Sleeve	XL	Tan
	194105	Pediatric Suspension Sleeve	XXL	Tan
B.	194120	Pediatric Suspension Sleeve with Sleeve Strap	XS	Tan
	194121	Pediatric Suspension Sleeve with Sleeve Strap	S	Tan
	194122	Pediatric Suspension Sleeve with Sleeve Strap	M	Tan
	194123	Pediatric Suspension Sleeve with Sleeve Strap	L	Tan
	194124	Pediatric Suspension Sleeve with Sleeve Strap	XL	Tan
	194125	Pediatric Suspension Sleeve with Sleeve Strap	XXL	Tan
C.	194140	Pediatric Suspension Sleeve with Lycra Middle	XS	Tan
	194141	Pediatric Suspension Sleeve with Lycra Middle	S	Tan
	194142	Pediatric Suspension Sleeve with Lycra Middle	M	Tan
	194143	Pediatric Suspension Sleeve with Lycra Middle	L	Tan
	194144	Pediatric Suspension Sleeve with Lycra Middle	XL	Tan
	194145	Pediatric Suspension Sleeve with Lycra Middle	XXL	Tan

Tiny Titan™ Suspension Sleeves Continued...

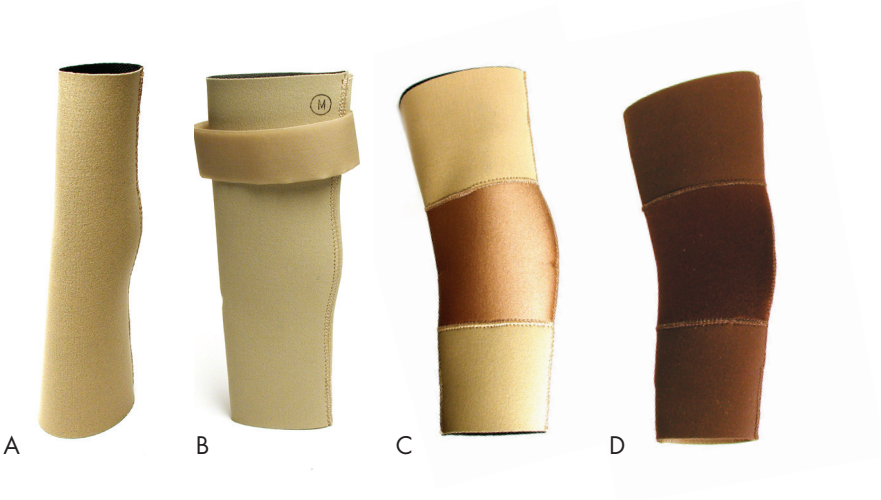
D.	194150	Pediatric Suspension Sleeve with Lycra Middle	XS	Black
	194151	Pediatric Suspension Sleeve with Lycra Middle	S	Black
	194152	Pediatric Suspension Sleeve with Lycra Middle	M	Black
	194153	Pediatric Suspension Sleeve with Lycra Middle	L	Black
	194154	Pediatric Suspension Sleeve with Lycra Middle	XL	Black
	194155	Pediatric Suspension Sleeve with Lycra Middle	XXL	Black

Features

- 1/8" Neoprene patellar contoured with airtight seams that hold the prosthesis secure.
- Contains no Latex®

Age	Knee		Elbow	
3-4	XS	(6-7" circ.)	XS	(4-5" circ.)
5-6	S	(7-8" circ.)	S	(5-6" circ.)
7-8	M	(8-9" circ.)	M	(6-7" circ.)
9-10	L	(9-10" circ.)	L	(7-8" circ.)
10-11	XL	(10-11" circ.)	XL	(8-9" circ.)
13-14	XXL	(11-12" circ.)		

These suggested sizes reflect the average size of children in these age groups.





## MightyMite® Shuttle Locks

- A. FC100204 MightyMite Cylindrical Housing Modular Shuttle Lock, without Plunger
- B. FC100202 MightyMite Titanium Pyramid Modular Shuttle Lock, without Plunger
- C. 125410mm Small Delrin Modular Shuttle Lock Kit, with 1" Plunger  
125412mm Small Delrin Modular Shuttle Lock Kit, with 1-1/2" Plunger

### Features

- Small, rugged design for active lightweight amputees
- Tested to ISO10328:60kg
- Removable locking mechanism for easy service & replacement
- Thermoforming or lamination options
- Compatible with 22mm endoskeletal systems



A



B



C



**MightyMite® Shuttle Locks Continued...**

MightyMite Lock	Weight	Building Height
FC100202	2.82oz /80g	34mm /1.34in
FC100204	2.96oz /84g	25.5mm /1.00in
125410/125412	1.20oz /34g	40.56mm /1.60in

**Accessories** (sold separately)

- 809826      Plunger 1", with 1/4-20 Thread
- 809827      Plunger 1 1/2", with 1/4-20 Thread
- 809826mm   Plunger 1", with M10 Metric Thread
- 809827mm   Plunger 1 1/2", with M10 Metric Thread
- 125420      Fabrication Kit for Thermoforming /Lamination

**Suggested L-Codes**

Disclaimer: For reference only. Practitioner must confirm information.

- L5671      Lower Extremity Locking Mechanism
- L5940      UltraLight Material (FC100202 Only)





## Distal End Attachments

- A. FC100114 4-Hole Adapter, with Medium Titanium Pyramid (60kg/132lbs)
- B. FC100132 4-Hole Adapter with Rotation (60kg/132lbs)
- C. FC100150 4-Hole Distal Attachment Block Kit (60kg/132lbs), Includes Lamination Accessories
- D. FC100151 Pediatric 4-Hole Distal Attachment Block (60kg/132lbs)
- E. FC100134 Rotatable **Medium** Pyramid Receiver (60kg/132lbs)  
FC100144 Rotatable **Small** Pyramid Receiver (45kg/99lbs)

**Note:** The MightyMite line features two pyramid receivers for distal end attachment. The medium receiver is engineered for the robust 60kg/132lbs rating and should be used with MightyMite components. The small receiver is designed to adapt to common 45kg/99lbs systems.

- F. FC100130 AK Socket Adapter with Rotation (60kg/132lbs) Includes Lamination Dummy
- G. FC100152 BK Socket Adapter, with Medium Titanium Pyramid (60kg/132lbs) - Including Lamination Cap
- H. FC100160 MightyMite Slide Unit - temporary alignment
- I. FC100106 4-Hole Spacer Blocks, 1/4"  
FC100108 4-Hole Spacer Blocks, 1/2"



A



B



C



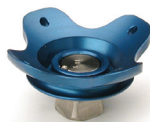
D



E



F



G



H



I



# MightyMite® Knee

The MightyMite Knee is a core component of the Fillauer and Hosmer MightyMite Endoskeletal Line. The knee is designed to be rugged and tough enough for the active pediatric amputees in a compact lightweight form, also ideal for geriatric population.

- A. FC100510 MightyMite 4-Bar Knee with Pyramid Adapter
- B. FC100500 MightyMite 4-Bar Knee without Proximal Attachment

## Features

- Choice of 4 proximal attachments
- Rugged, compact design with a 132 lb weight rating
- Cosmetic Knee center is only 1-5/8" from distal end of socket
- 3 different extension assist springs
- Gliding, easy to flex, polycentric design with friction control

Knee Configuration	Weight	Building Height
Knee Only	9.55oz /270g	63mm /3-3/4in
with Proximal Pyramid	10.35oz /294g	70mm /2-1/2in
with Slide Adapter	11.40oz /323g	84mm /3-3/8in
with Tapered 4-Hole	11.07oz /310g	75mm /2-15/16in
with Threaded Adapter	10.15oz /288g	67mm /2-5/8in

## Suggested L-Codes

Disclaimer: For reference only. Practitioner must confirm information.

- L-5611 4-Bar Linkage with Friction Control
- L-5920 Alignable System



A



B



## Knee Connection Options

- A. FC100501 MightyMite Pyramid Adapter (60kg/132lbs)
- B. FC100502\* MightyMite Slide Adapter (60kg/132lbs)
- C. FC100503 MightyMite 4-Hole Adapter (60kg/132lbs)
- D. FC100504 MightyMite Threaded Adapter (60kg/132lbs)
- E. FC100505\* MightyMite 4-Hole Adapter with Male Dovetail (60kg/132lbs)



Tested to ISO10328:60kg

\* These units also adapt to the adult Spectrum Alignment System from Hosmer



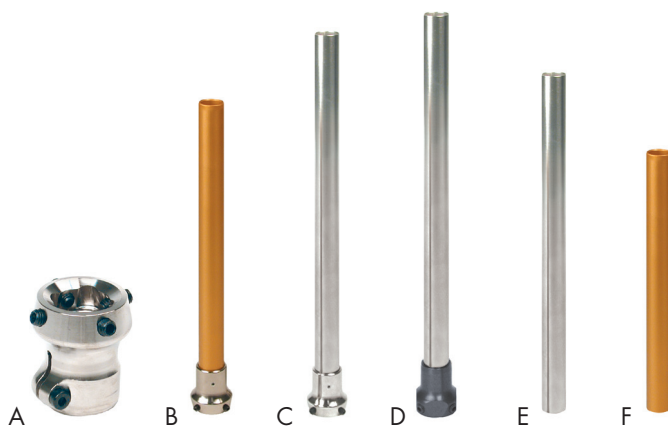


## Tube Clamps and Connectors

- A. FC100122 Tube Clamp Medium Pyramid Aluminum (60kg/132lbs)
- FC100123 Tube Clamp Medium Pyramid Titanium (60kg/132lbs)
- FC100124 Tube Clamp Large Pyramid Aluminum (60kg/132lb)
- B. Integrated 22mm Pylons with Medium Pryamid
  - FC100118 Aluminum Pylon with Aluminum Adapter (45kg/99lbs)
- C. FC100119 Alloy Steel Pylon with Titanium Adapter (60kg/132lbs)
- FC100120 Alloy Steel Pylon with Aluminum Adapter (60kg/132lbs)
- D. FC100121\* Alloy Steel Pylon with Adult Pyramid Receiver (60kg/132lbs)
- E. FC100142 Pylon Tube, Alloy Steel, 400mm (60kg/132lbs)
- F. FC100140 Pylon Tube, Aluminum, 300mm (45kg/99lbs)

### Also Available

- 220310 Tubing Cutter and Heavy Duty Replacement Wheels for Most Models



\* Permits adaptation to standard SACH Foot adaptor for feet. Size 5 (22cm)



## Foot Plates and Connectors

- A. FC100110 SACH Foot Adapter, with Medium Titanium Pyramid (60kg/132lbs) Includes SACH Foot Bolt (8mm)
- B. FC100104 1/4" SACH Foot Growth Compensation Spacer
- C. FC100102 1/2" SACH Foot Growth Compensation Spacer





## MightyMite® Feet

FC100314L	MightyMite Foot, 14cm, Left
FC100314R	MightyMite Foot, 14cm, Right
FC100315L	MightyMite Foot, 15cm, Left
FC100315R	MightyMite Foot, 15cm, Right
FC100316L	MightyMite Foot, 16cm, Left
FC100316R	MightyMite Foot, 16cm, Right
FC100317L	MightyMite Foot, 17cm, Left
FC100317R	MightyMite Foot, 17cm, Right
FC100318L	MightyMite Foot, 18cm, Left
FC100318R	MightyMite Foot, 18cm, Right
FC100319L	MightyMite Foot, 19cm, Left
FC100319R	MightyMite Foot, 19cm, Right
FC100320L	MightyMite Foot, 20cm, Left
FC100320R	MightyMite Foot, 20cm, Right
FC100321L	MightyMite Foot, 21cm, Left
FC100321R	MightyMite Foot, 21cm, Right

### Features


- Smooth appearance
- Shaped ankle
- Reinforced sole and maple keel for durability
- “Webbed” between great and second toe to allow modification for sandals
- Medium durometer heel

MightyMite® Feet are manufactured for Fillauer and Hosmer by Kingsley.

## The MightyMite® Endoskeletal Line

Fillauer and Hosmer have created a line of robust small componentry tested to 60 kg (132 lbs.); great for larger children, in that "in-between age," where adult components would be too bulky, but standard pediatric componentry would not be strong enough. The system is optimal for light duty geriatric and petite adult applications where smaller componentry would be beneficial.

MightyMite® components are based on a standard 22mm pylon system that can allow for integration with other 22mm pylon systems. Through proper selection of components, the MightyMite® Pyramid system can also be integrated with other pediatric knees or to adult feet and ankle components.

Tested to ISO10328:60kg 



These products can be purchased at the following Fillauer Companies:

### Fillauer

Toll-Free: (800) 251-6398 • Direct: (423) 624-0946 • Fax: (423) 629-7936  
2710 Amnicola Hwy • Chattanooga, TN 37406 USA • [www.fillauer.com](http://www.fillauer.com)

### Hosmer

Toll-free: (800) 827-0070 • Direct: (408) 379-5151 • Fax: (408) 379-5263  
561 Division Street, Campbell, CA 95008 USA • [www.hosmer.com](http://www.hosmer.com)

### Centri (European Representative)

Direct: +46 8 505 332 00 • Fax: +46 8 505 332 05  
Kung Hans Väg 2 • 192 68 Sollentuna • Sweden • [www.centri.se](http://www.centri.se)

