

A close-up portrait of a woman with shoulder-length, wavy blonde hair, smiling warmly at the camera. She is wearing a white top with delicate lace detailing around the V-neckline. The background is a soft, out-of-focus light, suggesting a bright indoor setting.

Naturalwear

NATURAL
BEAUTIFUL
YOU



The Best Fittings Begin with Naturalwear

For over fifty years, Trulife has dedicated itself to improving life for women who undergo breast surgery. Our mission remains to design a wide selection of the most natural breast forms, bras and accessories to restore comfort and confidence after breast surgery.


Naturalwear breast forms are created in a wide range of shapes and sizes to complement a woman's natural beauty. Trends in surgery type and lifestyle are addressed with such products as partial forms, leisure forms and swim forms.

Our beautifully detailed bras feature quality construction that is a Naturalwear hallmark. Fashionable and feminine styles keep every woman looking and feeling beautiful while providing a secure fit.

CONTENTS

BREAST FORMS	01
BodiCool	02
Silk	04
SoLight	08
Traditional	09
Silicone Swim	11
Leisure & Post-Surgery	12
Evenly You	13
RADIANT IMPRESSIONS	15
BRAS	17
PRODUCT CARE	40
ACCESSORIES	41
BRA HOOK & EYE GUIDE	45
BREAST FORM SIZING GUIDE	47
TERMS & CONDITIONS OF SALE	48

NATURALWEAR BREAST FORMS

A woman with grey hair tied back, wearing a light blue tank top and black leggings, is captured in a running pose on a paved path. A semi-transparent grey text box is overlaid on the right side of the image, containing descriptive text about the product. The background shows a blurred outdoor setting with a railing and steps.

BodiCool breast forms integrate an innovative channeling system of Cooling Cushions with TruCool Gel, a Trulife proprietary silicone blend that uses an advanced cooling technology. BodiCool breast forms provide a constant cooling effect by continuously drawing excess heat away from a woman's body. The raised Cooling Cushion contact points of the channeling system promote enhanced air circulation allowing for optimal cooling.

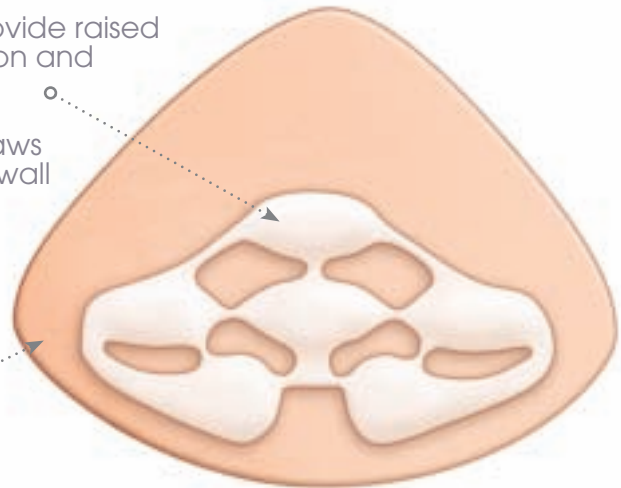
BODICOOL

BodiCool breast forms address the two primary concerns of breast form wearers: heat and weight.

Heat generated from a woman's chest wall is transferred and absorbed into the TruCool Gel and remains there until the breast form is removed. At first, the cooling material is frosty in appearance then gradually turns clear as it absorbs excess heat. Once the BodiCool breast form is removed, the TruCool Gel returns to its original frosty appearance, indicating it is releasing heat and rejuvenating. For more information on BodiCool, visit www.bodicool.com

Features and Technology

- TruCool Gel, a Trulife proprietary silicone blend, features advanced cooling technology
- Cooling Cushions with TruCool Gel provide raised contact points promoting air circulation and maximum comfort
- Technologically advanced design draws and contains excess heat from chest wall
- A silky-soft, matte skin
- Removable CoolMax® breast form cover
- Lightweight silicone helps the breast form feel even cooler



490 BODICOOL TRIANGLE

Symmetrical Triangle

AVERAGE TO FULL SIZES 1-14

- Versatile triangle shape fits a variety of body and surgery types
- Fits well with both underwire and softcup bras



491 BODICOOL OVAL

Symmetrical Oval

AVERAGE TO FULL SIZES 1-14

- Symmetrical shape offers a natural, full profile
- Fits well with both underwire and softcup bras
- Recommended for use with bilateral surgery

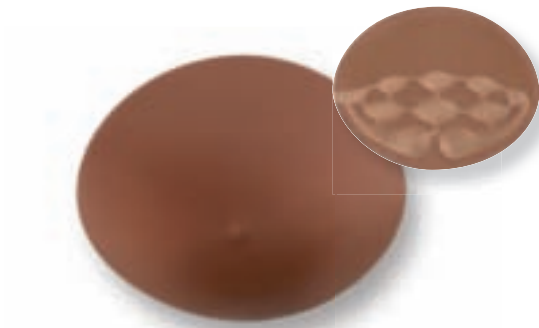


492 BODICOOL ENCORE TRIANGLE

Symmetrical Triangle

AVERAGE TO FULL SIZES 1-14

- Versatile triangle shape fits a variety of body and surgery types
- Fits well with both underwire and softcup bras



493 BODICOOL ENCORE OVAL

Symmetrical Oval

AVERAGE TO FULL SIZES 1-14

- Symmetrical shape offers a natural, full profile
- Fits well with both underwire and softcup bras
- Recommended for use with bilateral surgery



494 BODICOOL TEARDROP

Symmetrical Teardrop

SHALLOW TO AVERAGE SIZES 1-14

- Versatile teardrop shape tapers at top extension
- Tapered extension can be positioned in any direction for optimal fit

SILK

Silk defines what a breast form should be; soft and natural. The innovative skin is silky-soft and offers unparalleled softness and suppleness. All Silk breast forms offer a natural drape not found with other breast forms.

Features and Technology

- 30% lighter than traditional silicone breast forms
- A silky-soft, matte skin
- Multiple profile options
- Available in multiple shapes and sizes
- Removable cotton breast form cover



471 SILK TRIANGLE

Symmetrical Triangle

SHALLOW TO AVERAGE SIZES 1-17

- Versatile triangle shape fits a variety of body and surgery types
- Fits well with both underwire and softcup bras
- Concave back accommodates excess tissue



483 SILK ENCORE TRIANGLE

Symmetrical Triangle

SHALLOW TO AVERAGE SIZES 1-17

- Versatile triangle shape fits a variety of body and surgery types
- Fits well with both underwire and softcup bras
- Concave back accommodates excess tissue



481 SILK ULTIMA TRIANGLE

Symmetrical Triangle

AVERAGE TO FULL SIZES 1-14

- Versatile triangle shape fits a variety of body and surgery types
- Fits well with both underwire and softcup bras



472 SILK TRIANGLE PLUS

Symmetrical Triangle

AVERAGE TO FULL SIZES 1-17

- Versatile triangle shape fits a variety of body and surgery types
- Fits well with both underwire and softcup bras
- Comfortable, conformable back provides additional fullness and projection



473 SILK TEARDROP

Symmetrical Teardrop

SHALLOW TO AVERAGE SIZES 1-14

- Versatile teardrop shape tapers at top extension
- Tapered extension can be positioned in any direction for optimal fit



475 SILK A SUPREME

Asymmetrical

SHALLOW TO AVERAGE SIZES 1-14 L/R

- Asymmetrical shape replaces tissue at upper chest and underarm
- Concave back accommodates excess tissue
- Recommended for use with bilateral or extensive surgery



476 SILK CONNECT

Symmetrical Triangle

SHALLOW TO AVERAGE SIZES 1-10

- Versatile triangle shape fits a variety of body and surgery types
- Fits well with both underwire and softcup bras
- Can be worn attached to chest wall or unattached with protective back in place



477 SILK FLEX

Symmetrical Heart-shape

SHALLOW TO AVERAGE SIZES 1-14

- Versatile heart-shape can be positioned in any direction for optimal fit
- Fits well with underwire bras



478 SILK XTEND

Asymmetrical

AVERAGE TO FULL SIZES 1-14 L/R

- Asymmetrical shape replaces tissue at upper chest and underarm
- Concave back accommodates excess tissue
- Recommended for use with bilateral or extensive surgery



482 SILK XTEND PLUS

Asymmetrical

AVERAGE TO FULL SIZES 1-14 L/R

- Asymmetrical shape replaces tissue at upper chest and underarm
- Recommended for use with bilateral or extensive surgery
- Comfortable, conformable back provides additional fullness and projection



480 SILK ALLURE

Symmetrical Oval

AVERAGE TO FULL SIZES 1-14

- Symmetrical shape offers a natural, full profile
- Fits well with both underwire and softcup bras
- Recommended for use with bilateral surgery



484 SILK ENCORE ALLURE

Symmetrical Oval

AVERAGE TO FULL SIZES 1-14

- Symmetrical shape offers a natural, full profile
- Fits well with both underwire and softcup bras
- Recommended for use with bilateral surgery

SOLIGHT

SoLight breast forms, the original forms that revolutionized lightweight fit and comfort. SoLight breast forms are 25% lighter than traditional silicone breast forms. SoLight silicone allows women to experience lightweight comfort with a natural look and feel.

Features and Technology

- Lightweight comfort
- Molded back promotes air circulation
- Removable cotton breast form cover



550 SOLIGHT

Symmetrical Triangle

AVERAGE TO FULL SIZES 1-17

- Versatile triangle shapes fits a variety of body and surgery types
- Fits well with both underwire and softcup bras
- Concave back accommodates excess tissue



553 SUPREME LIGHT

Asymmetrical

AVERAGE TO FULL SIZES 3-14 L/R

- Asymmetrical shape replaces tissue at upper chest and underarm
- Concave back accommodates excess tissue
- Recommended for use with bilateral or extensive surgery

TRADITIONAL

Traditional breast forms drape and move like natural breast tissue. The soft film and variety of shapes make traditional silicone a good option for many women.

Features and Technology

- Emulates natural breast tissue
- Provides optimal weight balance
- Translucent color
- Removable cotton breast form cover



508 SYMPHONY

Symmetrical Triangle

AVERAGE TO FULL SIZES 1-14

- Versatile triangle shape fits a variety of body and surgery types
- Fits well with both underwire and softcup bras



528 SYMPHONY ENCORE

Symmetrical Triangle

AVERAGE TO FULL SIZES 3-14

- Versatile triangle shape fits a variety of body and surgery types
- Fits well with both underwire and softcup bras
- Ideal for a variety of dark complexions



509 E SUPREME

Symmetrical Teardrop

SHALLOW TO AVERAGE SIZES 1-17

- Versatile teardrop shape tapers at top extension
- Tapered extension can be positioned in any direction for optimal fit



503 A SUPREME

Asymmetrical

SHALLOW TO AVERAGE SIZES 1-14 L/R

- Asymmetrical shape replaces tissue at upper chest and underarm
- Concave back accommodates excess tissue
- Recommended for use with bilateral or extensive surgery

SILICONE SWIM COLLECTION

Silicone swim forms are ideal for all water activities. Firm, translucent silicone with concave back allows for buoyancy and retains its shape in and out of water.

Features and Technology

- Can be used in chlorinated and salt water
- Silicone does not absorb water
- Concave back
- Translucent color



640 CALYPSO

Symmetrical Heart-shape

SHALLOW TO AVERAGE SIZES 1-14

- Translucent heart-shape can be positioned in any direction for optimal fit
- Concave back allows for water flow and shape retention



641 TROPEZ

Symmetrical Triangle

AVERAGE TO FULL SIZES 1-14

- Translucent triangle shape fits a variety of body and surgery types
- Concave back allows for water flow and shape retention

LEISURE & POST-SURGERY

Ideal collection of lightweight foam breast forms for post-surgery, leisure and moderate activities. Soft foam breast forms fit securely in post-surgical camisoles and pocketed bras.

Features and Technology

- Soft, lightweight foam
- Removable cotton cover



611 TRI-LEISURE

Symmetrical Triangle

SIZES 3-14

- Triangle shape fits a variety of body and surgery types
- Inner weighted core provides minimal weight
- Recommended for leisure wear



615 FEATHERWEIGHT

Symmetrical Teardrop

SIZES 1-14

- Versatile teardrop shape tapers at top extension
- Soft, non-weighted foam
- Recommended for post-surgery



616 TRI- FEATHERWEIGHT

Symmetrical Triangle

SIZES 1-14

- Triangle shape fits a variety of body and surgery types
- Soft, non-weighted foam
- Recommended for post-surgery

EVENLY YOU

Evenly You is a complete line of partial silicone breast forms and are ideal for post-lumpectomy, post-reconstruction and enhancement of underdeveloped breasts. All Evenly You partial breast forms feature tapered edges to ensure a flawless, smooth profile under clothing.

Features and Technology

- A silky-soft matte skin
- Smooth, tapered edges
- Translucent color
- Can be worn with or without a pocketed bra



531 EVENLY YOU TEARDROP

Symmetrical Teardrop

SIZES 1-11

- Teardrop shape offers thin, overall coverage
- Recommended for post-reconstruction or post-lumpectomy



533 EVENLY YOU TRIANGLE

Symmetrical Triangle

SIZES 3 - 9

- Triangle shape offers thin, overall coverage
- Recommended for post-reconstruction or post-lumpectomy



543 EVENLY YOU ECLIPSE PLUS

Symmetrical Eclipse

SIZES S, M, L

- Eclipse shape offers moderate coverage
- Comfortable, conformable back provides additional fullness
- Recommended for post-lumpectomy



545 EVENLY YOU TRIANGLE PLUS

Symmetrical Triangle

SIZES 3 - 9

- Triangle shape offers overall coverage
- Comfortable, conformable back provides additional fullness and projection
- Recommended for post-reconstruction or post-lumpectomy



Non-Surgical Breast & Nipple Restoration

Radiant Impressions



Achieving a symmetrical appearance after breast surgery can be challenging. For several, a Radiant Impressions custom breast prosthesis may be the perfect solution. Custom molded to fit each individual, Radiant Impressions offers choices not available with a standard off-the-shelf breast form.

- Every detail of a woman's breast is artfully sculpted for a one-of-a-kind custom, hand-crafted fit
- Custom made to a woman's unique contour, shape and profile, restoring her natural look and confidence
- A RADIANT IMPRESSIONS begins with a plaster casting or scanning technology process. Both methods capture all the details of a woman's breast and chest wall
- Please contact Trulife for information on Radiant Impressions Trainings and Scanning Events
- Visit www.radiantimpressions.com to learn more!

A RADIANT IMPRESSIONS

Custom Breast Prosthesis Offers:

- Lightweight construction for comfort and compliance
- A sense of wholeness
- The ability to be worn in a non-pocketed bra
- A close match to many skin tones with 30+ colors from which to choose
- Durable construction allows the prosthesis to be worn while swimming, running and during other physical activities

The Radiant Impressions product line offers products ideal for mastectomy, lumpectomy, reconstruction and bilateral surgeries, as well as a nipple/areola perfect for women who choose not to undergo nipple/areola reconstruction.

Each Radiant Impressions custom breast prosthesis comes with a Radiant Care Kit.

599 Radiant Impressions Custom Breast Prosthesis

- Custom silicone breast prosthesis with custom nipple/areola
- Includes travel bag and Radiant Care Kit

601 Radiant Impressions Custom Nipple/Areola (pair)

- Custom silicone nipple/areola

592 Radiant Care Kit

- Includes all the skin care products needed to clean, attach and care for the Radiant Impressions custom breast prosthesis

570 Radiant Impressions Dealer Start-Up Kit

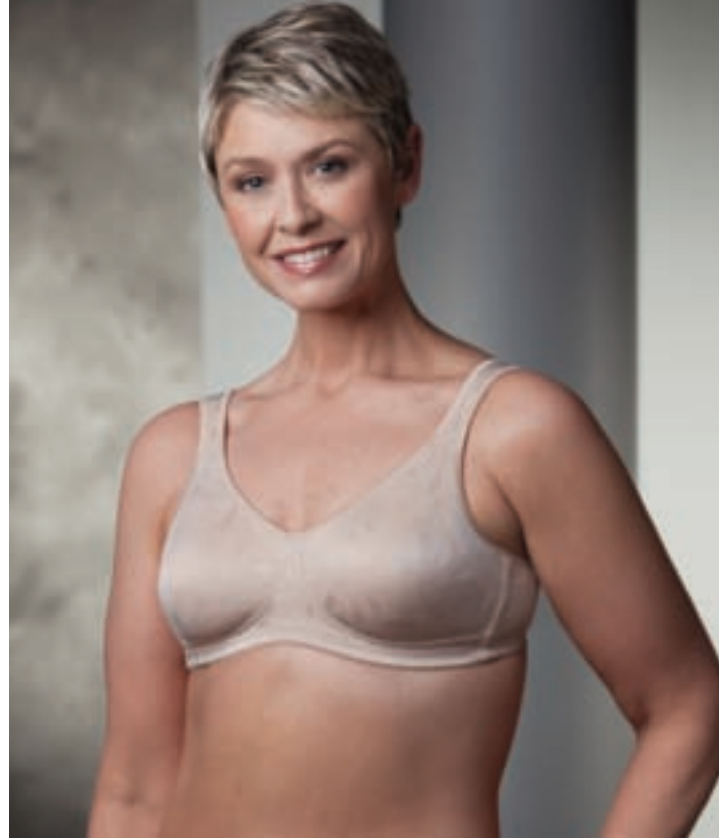
- Includes all materials to showcase, market and sell the Radiant Impressions product line



Seamless cups provide a smooth and flawless profile.



4007 EMILY
SEAMLESS MICROFIBER CAMISOLE
T-SHIRT SOFTCUP



4006 NOELLE
SEAMLESS MICROFIBER
CONTOUR SOFTCUP

FIT: Average to Full
SIZES: 34-42A, 34-42B, 34-42C, 34-40D
STYLE: Molded Foam Softcup
STRAPS: Adjustable, 5/8" elastic
COLORS: Nude, Powder Pink, Black

- Seamless cups
- Soft, silky allover microfiber fabric
- Breathable, seamless, extended mesh pockets

FIT: Average to Full
SIZES: 34-42AA, 34-42A, 32-42B, 32-40C, 34-40D
STYLE: Softcup
STRAPS: Adjustable, 5/8" elastic
COLORS: White, Latte, Black

- Seamless cups
- Mold-to-body spacer fabric
- Breathable, seamless, extended mesh pockets

NATURALWEAR BRAS

designed for
a more natural, beautiful, you!

Every good fitter knows the fit of the bra is the most important element of the post-breast surgery fitting. Naturalwear bras offer women everyday confidence and comfort, fashionable styling and allow for an active lifestyle.

Naturalwear bras are available in a variety of profiles, fits, styles and colors.

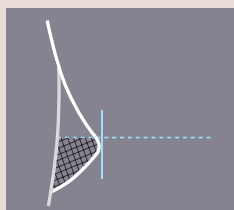


FIT

When fitting, there are three distinct shapes to describe profile: **Shallow**, **Average** and **Full**.

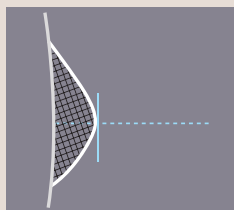
The profile type is not dependent on cup capacity. For example, a D cup woman can actually have a shallow profile and an A cup woman can have a full profile.

Understanding different profiles can speed up the fitting process, help with inventory control and yield the best fit.



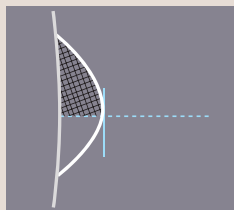
SHALLOW

The breast tissue drapes in the lower cup of the bra and is often seen on the mature woman with soft breast tissue. The shallow profile woman requires a bra with a large bottom cup and small upper cup.



AVERAGE

There is an equal amount of breast tissue on the top and bottom of the breast, with a more round appearance in the upper cup area. The average profile woman usually has firm breast tissue and a round profile.



FULL

Has the most round appearance. The full profile woman requires a bra that provides not only bottom cup support but also support and coverage for the upper part of the breast. The full profile can also be broad without much projection, needing a bra that provides containment such as M-frame styles that separate and support beautifully.

All Naturalwear bras are highlighted with a suggested profile fit. Knowing your customer's profile and the best Naturalwear bras for each profile can provide a personalized, efficient and rewarding fitting experience.

Each bra listing highlights special design features, benefits and technology engineered into it. Be sure to look for CoolMax® and other performance enhancements for increased comfort and support.

CoolMax® is a registered trademark of INVISTA.

SEAMLESS



4010 CHRISTINA

SEAMLESS LACE MICROFIBER SOFTCUP

FIT: Shallow to Average
SIZES: 32-40AA, 32-40A, 32-40B, 32-40C, 34-40D
STYLE: Softcup
STRAPS: Adjustable, 5/8" elastic
COLORS: White, Nude

- Seamless cups
- Soft, silky microfiber fabric
- Breathable, seamless, extended CoolMax pockets

Seamless styles wear beautifully under t-shirts.



273 OLIVIA
SEAMLESS ENGINEERED
LACE SOFTCUP



4020 ADDIE
SEAMLESS MICROFIBER
SOFTCUP

FIT: Average to Full
SIZES: 34-40A, 34-40B, 34-40C, 34-38D
STYLE: Softcup
STRAPS: Adjustable, 5/8" rigid
COLORS: White, Champagne, Black

- Seamless cups
- Engineered floral knit fabric
- Soft elastic at neckline
- Breathable, extended mesh pockets

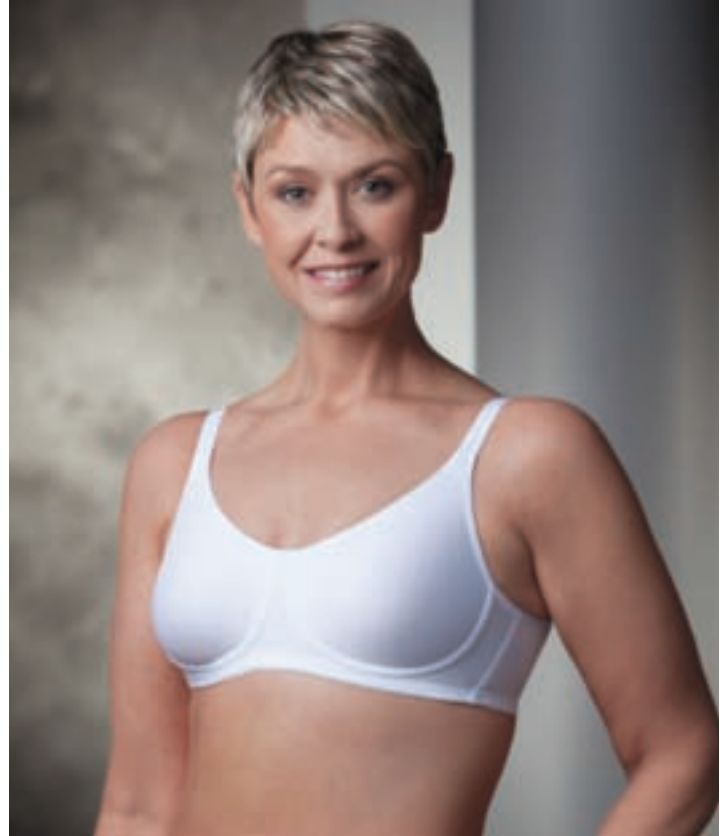
FIT: Shallow to Average
SIZES: 34-38A, 34-40B, 34-40C, 34-40D
STYLE: Softcup
STRAPS: Padded, adjustable, 3/4" elastic
COLORS: Cream

- Silky, jacquard allover microfiber fabric
- Side stays
- Soft, seamless, extended pockets

Mesh pockets are soft, lightweight and comfortable.



4003 CHLOE
SEAMLESS DIAMOND JACQUARD
SOFTCUP



4002 LILY
SEAMLESS MICROFIBER
UNDERWIRE

FIT: Shallow to Average
SIZES: 34-40A, 34-40B, 34-40C, 34-38D
STYLE: Softcup
STRAPS: Adjustable, 5/8" rigid
COLORS: White, Nude, Black

- Seamless cups
- Soft, seamless microfiber-lined cups
- Breathable, seamless, extended mesh pockets

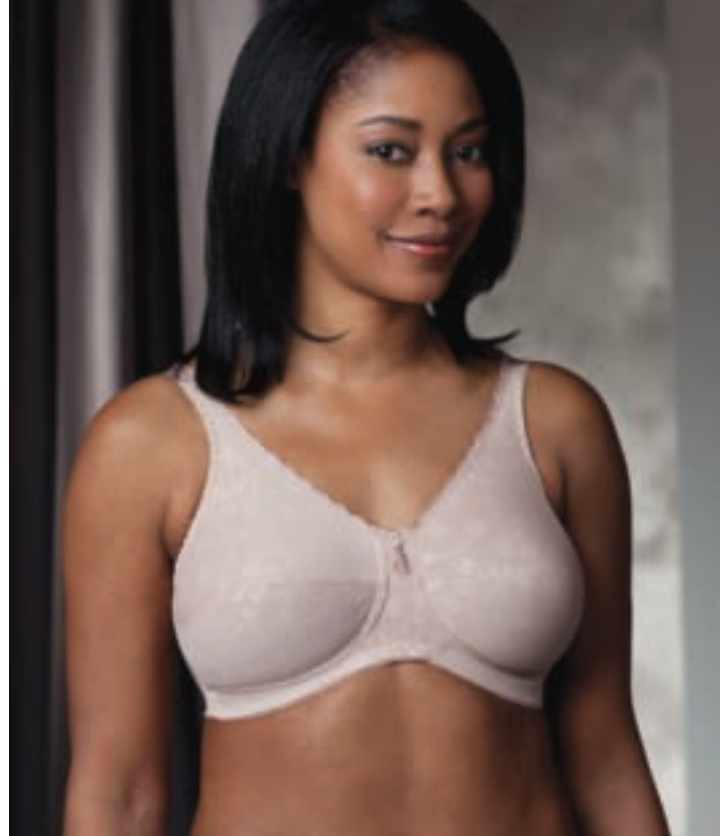
FIT: Average to Full
SIZES: 34-40A, 34-40B, 34-40C, 34-38D
STYLE: Softcup
STRAPS: Adjustable, 5/8" rigid
COLORS: White, Nude, Black, Powder Pink

- Seamless cups
- Soft, silky allover microfiber fabric
- Breathable, seamless, extended mesh pockets

Extended pockets ensure complete breast form coverage.



4004 SYDNEY
JACQUARD MICROFIBER SOFTCUP



4015 GABRIELLA
ROSE EMBOSSED SOFTCUP

FIT: Shallow to Average
SIZES: 32-38AA, 32-42A, 32-42B, 34-40C,
 34-40D
STYLE: Softcup
STRAPS: Adjustable, 5/8" rigid
COLORS: White, Latte

- Soft, silky microfiber fabric
- Fashion-forward front double straps
- Breathable, extended mesh pockets

FIT: Shallow to Average
SIZES: 32-42A, 32-44B, 34-52C, 34-52D,
 34-48DD, 34-48DDD
STYLE: Softcup
STRAPS: Adjustable, 3/4" elastic
COLORS: White, Latte, Black

- Versatile fit
- Lace trim at neckline
- Breathable, extended CoolMax pockets

210 BARBARA

LACE ACCENT SOFTCUP

FIT: Shallow to Average
SIZES: 32-42A, 32-44B, 34-52C,
34-52D, 34-48DD, 34-48DDD
STYLE: Softcup
STRAPS: Adjustable, 3/4" elastic
COLORS: White, Nude, Black,
Powder Pink, Chocolate,
Cerise, Midnight Blue

- Versatile fit
- Lace trim at neckline
- Soft, cotton pockets



Fashion inspired styling enhances femininity.



412 LINDA
MICROFIBER SOFTCUP



4001 HANNAH
EMBROIDERED MESH SOFTCUP

FIT: Shallow to Average
SIZES: 32-42A, 32-44B, 34-44C, 34-38D
STYLE: Softcup
STRAPS: Adjustable, 5/8" rigid
COLORS: White, Nude

- Soft, silky microfiber fabric
- Soft elastic at neckline
- Breathable, extended mesh pockets

FIT: Shallow to Average
SIZES: 32-42A, 32-44B, 34-44C, 34-44D
STYLE: Softcup
STRAPS: Adjustable, 3/4" elastic
COLORS: Nude

- European fashion-inspired embroidery
- Breathable, extended mesh pockets

A woman with short, layered blonde hair is sitting on a white sofa. She is wearing a black lace-trimmed bra with a soft cup design. The background is a soft, out-of-focus grey and white.

4022 CLAIRE

CAMI STYLE LACE ACCENT
SOFTCUP

FIT: Average to Full
SIZES: 34-42A, 32-42B, 32-42C, 32-42D, 34-40E
STYLE: Softcup
STRAPS: Adjustable, 3/4" elastic
COLORS: Cream, Black

- Delicate embroidery at neckline
- Side stays
- Breathable, extended mesh pockets

Lace detail at neckline adds a soft, beautiful feminine touch.



4019 JESSICA
CAMI STYLE LACE ACCENT
SOFTCUP



212 BETHANY
FRONT & BACK CLOSURE LACE
ACCENT SOFTCUP

FIT: Shallow to Average
SIZES: 32-42A, 32-44B, 34-52C, 34-52D,
34-48DD, 34-48DDD
STYLE: Softcup
STRAPS: Adjustable, 3/4" elastic
COLORS: White, Nude, Black, Powder Pink

- Versatile fit
- Camisole panel at neckline
- Breathable, CoolMax pockets

FIT: Shallow to Average
SIZES: 34-42B, 34-44C, 34-44D, 34-44DD
STYLE: Softcup
STRAPS: Padded, adjustable, 3/4" elastic
COLORS: White, Nude

- Ideal for women with limited upper body mobility, arthritis or lymphedema
- Easy-to-use, front & back closures
- Breathable, CoolMax padded straps and extended pockets

98 CHELSEA

LACE LONG-LINE SOFTCUP

FIT: Average to Full
SIZES: 36-42B, 38-44C, 38-48D
STYLE: Softcup
STRAPS: Adjustable, 1" elastic
COLORS: White

- Light fiberfill
- Two-way stretch front and back powernet panels
- Wide 2" non-flip comfort band
- Breathable, soft cotton/polyester mesh pockets



*Cotton bras are comfortable and soft
after radiation treatment.*



84 VICTORIA
CLASSIC TAILORED SOFTCUP



140 TERESA
COTTON CLASSIC TAILORED
SOFTCUP

FIT: Average to Full
SIZES: 32-36AA, 32-40A, 32-40B, 34-40C
STYLE: Softcup
STRAPS: Adjustable, 5/8" elastic
COLORS: White, Nude

- Classic design
- Light fiberfill
- Breathable, soft cotton/polyester mesh pockets

FIT: Average to Full
SIZES: 34-40A, 34-40B, 34-40C
STYLE: Softcup
STRAPS: Adjustable, 5/8" elastic
COLORS: White

- Ideal for wear after radiation treatment
- Smooth, cotton-rich fabric
- Breathable, soft cotton/polyester mesh pockets

410 KATRINA

FLORAL JACQUARD SOFTCUP

FIT: Shallow to Average
SIZES: 34-38AA, 34-42A, 34-44B,
34-44C, 34-44D
STYLE: Softcup
STRAPS: Adjustable, 5/8" elastic
COLORS: White, Champagne

- Light fiberfill
- Soft elastic at neckline
- Breathable, extended CoolMax pockets



290 ISABEL

SCALLOPED EMBROIDERED LACE SOFTCUP

FIT: Average to Full
SIZES: 34-42B, 34-46C,
34-48D, 36-48DD
STYLE: Softcup
STRAPS: Adjustable, 5/8" elastic
34-36B, 34C; 3/4" 38-42B,
36-46C, 34D; 1" 36-48D,
36-48DD
COLORS: White, Nude

- Light fiberfill
- Two-way stretch powernet fabric
- Breathable, extended cotton/
polyester mesh pockets



Wide side panels provide excellent underarm support.



105 EMMA
FULL SUPPORT UNDERWIRE



190 IRENE
CLASSIC FULL SUPPORT SOFTCUP

FIT: Average to Full
SIZES: 34-42B, 34-42C, 34-44D, 34-44DD
STYLE: Underwire
STRAPS: Adjustable, 3/4" elastic B and C; 1" D and DD
COLORS: Nude

- Flexible underwire, wide band and side stays
- Two-way stretch powernet fabric
- Breathable, soft cotton/polyester mesh pockets

FIT: Average to Full
SIZES: 34-38A, 34-42B, 34-46C, 34-48D, 36-46DD
STYLE: Softcup
STRAPS: Adjustable, 5/8" elastic 34-38A, 34-36B, 34C; 3/4" 38-42B, 36-46C, 34D; 1" 36-48D, 36-46DD
COLORS: White, Nude, Black

- Light fiberfill
- Two-way stretch powernet fabric
- Breathable, soft cotton/polyester mesh pockets

SUPPORT

For posture support, choose a bra with supportive powernet back.



202 MANDY
THREE-QUARTER LENGTH
POSTURE SUPPORT SOFTCUP



297 ROSE
FULL SUPPORT EMBOSSED
SOFTCUP

FIT: Average to Full
SIZES: 36-38A, 36-42B, 36-46C, 38-48D,
38-48DD
STYLE: Softcup
STRAPS: Adjustable, 1" elastic
COLORS: White, Nude, Black

- Ideal for women with limited upper body mobility, arthritis or lymphedema
- Light fiberfill
- CoolMax fabric lines the reinforced criss-cross posture support back panel
- Breathable, CoolMax pockets

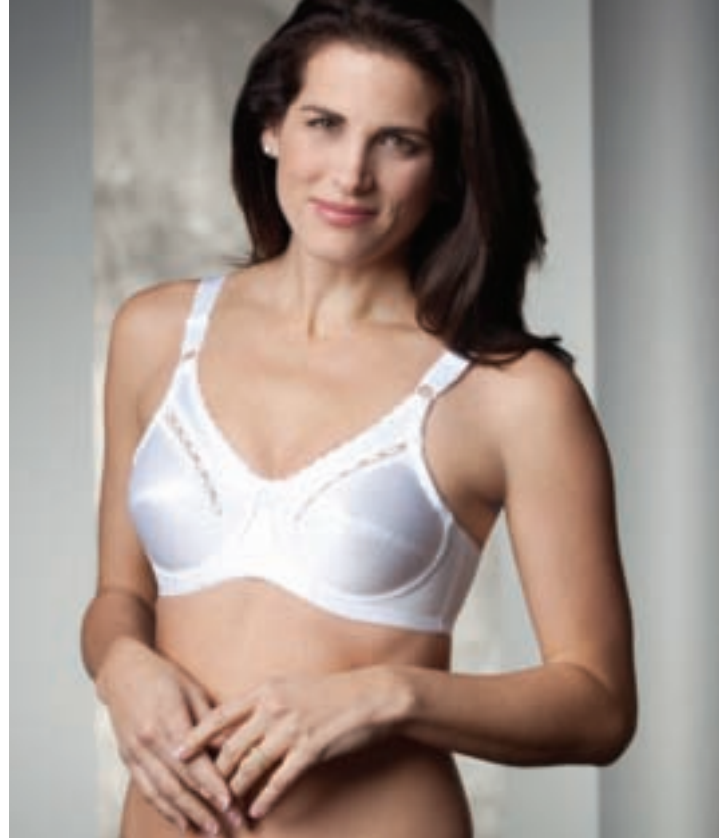
FIT: Average to Full
SIZES: 34-42B, 34-46C, 36-48D, 36-48DD,
36-48DDD
STYLE: Softcup
STRAPS: Adjustable, 1" elastic
COLORS: White, Nude, Black

- Soft elastic at neckline
- Light fiberfill
- Two-way stretch powernet fabric
- Breathable, extended cotton/polyester mesh pockets

Underwire styles create lift, support and beautiful shaping.



4023 ADALYN
FULL SUPPORT LACE ACCENT
UNDERWIRE



215 ELISA
FULL SUPPORT EMBOSSED
UNDERWIRE

FIT: Average to Full
SIZES: 34-38A, 34-40B, 34-40C, 34-40D
STYLE: Underwire
STRAPS: Adjustable, padded, 5/8" elastic
COLORS: Cream

- Soft elastic at neckline
- Side stays
- Breathable, extended mesh pockets

FIT: Average to Full
SIZES: 34-42B, 34-42C, 34-44D, 34-44DD
STYLE: Underwire
STRAPS: Adjustable, 3/4" elastic B and C;
1" D and DD

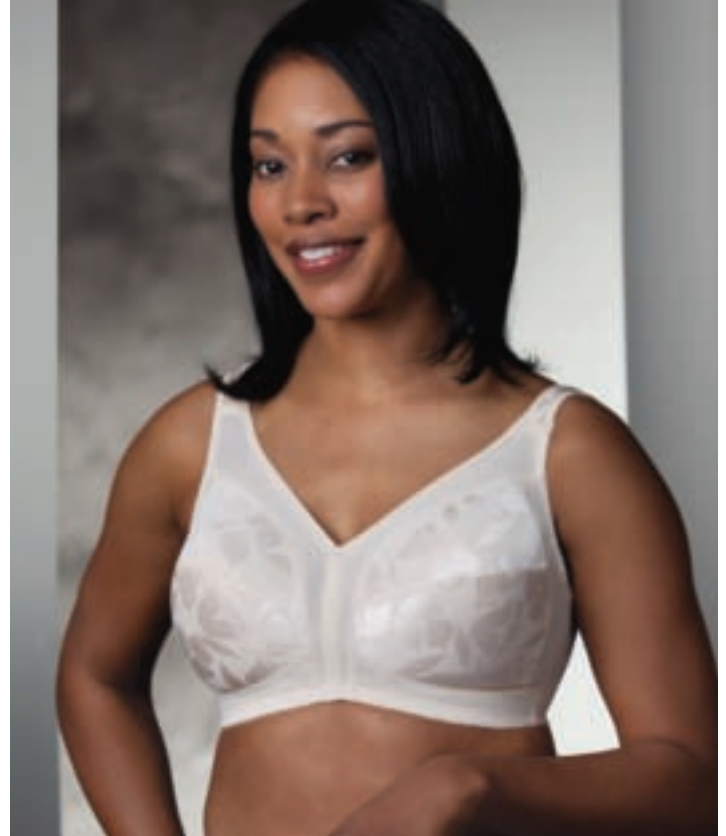
COLORS: White

- Underwire is sewn into powernet band
- Side stays
- Breathable, soft cotton/polyester mesh pockets

DDD styling can be beautiful!



420 KATE
EMBROIDERED M-FRAME SOFTCUP



422 ELIZABETH
M-FRAME SOFTCUP

FIT: Average to Full
SIZES: 34-40A, 34-44B, 34-44C, 34-48D,
34-48DD, 38-46DDD
STYLE: Softcup
STRAPS: Adjustable, 7/8" rigid
COLORS: White, Nude, Black

- Light fiberfill
- Wide, non-flip comfort band
- Breathable, extended CoolMax pockets

FIT: Average to Full
SIZES: 36-48B, 36-48C, 36-48D, 36-48DD,
38-48DDD
STYLE: Softcup
STRAPS: Padded, adjustable, 7/8" rigid
COLORS: White, Nude

- Padded, spacer fabric straps
- Rigid back straps
- Breathable, extended mesh pockets

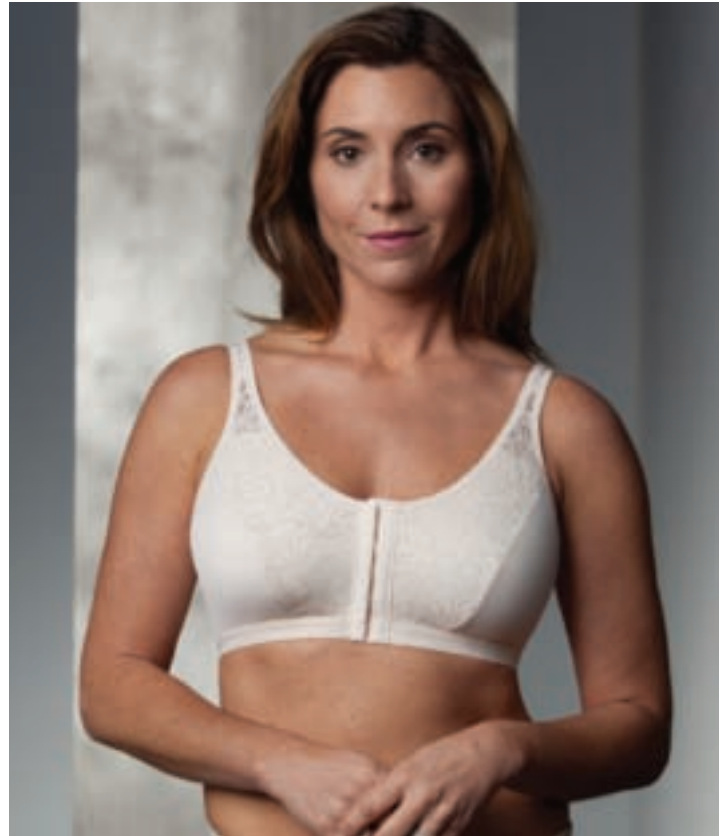
LIVING WELL



Front/back closure bras are ideal for women with limited upper body mobility.



326 VIOLET
COTTON STRETCH LEISURE
SOFTCUP



327 CHARLOTTE
MICROFIBER STRETCH LEISURE
SOFTCUP

SIZES: 32/34, 36/38, 40/42 A/B
32/34, 36/38, 40/42, 44/46 C/D
STYLE: Softcup
STRAPS: Camisole style, non-adjustable
COLORS: White

- Recommended for post-surgery and leisure wear
- Ideal for women with limited upper body mobility, arthritis or lymphedema
- Allover stretch cotton blend fabric
- Breathable, soft cotton/polyester mesh pockets

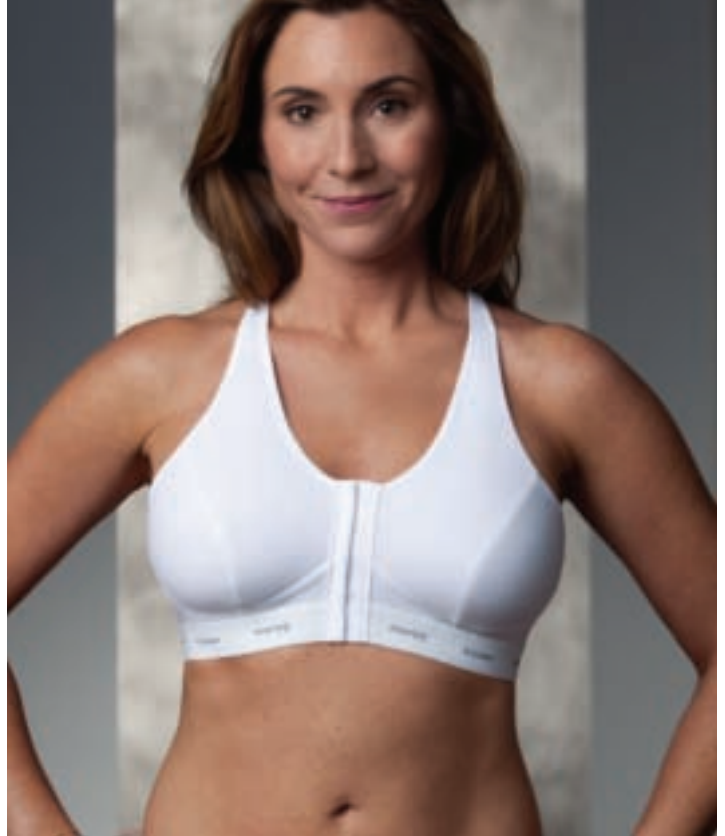
SIZES: 32/34, 36/38, 40/42 A/B
32/34, 36/38, 40/42, 44/46 C/D
STYLE: Softcup
STRAPS: Camisole style, non-adjustable
COLORS: White, Nude

- Recommended for post-surgery and leisure wear
- Ideal for women with limited upper body mobility, arthritis or lymphedema
- Soft, extended microfiber pockets

*CoolMax wicks moisture away from the skin
for a cool, comfortable feeling.*



330 SOPHIA
ACTIVITY SOFTCUP



331 SARA
ACTIVITY SOFTCUP
WITH FRONT CLOSURE

SIZES: 34, 36, 38, 40, 42, 44 A/B
34, 36, 38, 40, 42, 44 C/D
STYLE: Softcup
STRAPS: Lightly padded, adjustable, 7/8" rigid
COLORS: White, Grey, Black

- Functional cotton/Lycra provides encapsulation and support
- Wide, 1" logo bottom band
- Breathable, extended CoolMax pockets

SIZES: 34, 36, 38, 40, 42, 44 A/B
34, 36, 38, 40, 42, 44 C/D
STYLE: Softcup
STRAPS: Adjustable, rigid 5/8" on bands
34-38; 7/8" on bands 40-44
COLORS: White

- Ideal for women with limited upper body mobility, arthritis or lymphedema
- Rigid T-back straps and breathable back mesh panel
- Wide, 1" logo bottom band
- Breathable, extended CoolMax pockets



603 JENNIFER

CAMISOLE WITH DRAIN POUCHES

SIZES: S, M, L, XL, 2XL
STRAPS: Camisole style, non-adjustable
COLORS: White, Ivory, Black

- Ideal for post-surgery and leisure wear
- Includes two fiber-filled breast forms and two detachable drain pouches
- Inner shelf panel holds fiber-filled breast forms



Breast Forms

Naturalwear silicone breast forms are designed to be worn by women of all ages, surgery types and lifestyles. Our breast forms are available in an extensive range of shapes, sizes, textures and weights to ensure every woman can find the breast form that best suits her needs. A little care and attention will ensure long-lasting comfort and satisfaction.

To clean a silicone breast form, hand wash gently in lukewarm water with a mild soap such as TruKleen. Dry with a soft towel, do not wring or rub. Avoid using powders, perfumes or hot water directly on the breast form. Care should be taken to avoid sharp objects that may damage the breast form.

It is important to wear the correct size bra that fits properly and does not force the breast form into a different shape. This may cause the breast form to crease or permanently damage the breast form.

Most Naturalwear breast forms are supplied with a soft breast form cover. It is important to handle the breast form gently when inserting and removing it from the cover or pocket of the bra. Repeated squeezing or pulling may cause damage over time.

When not wearing the breast form, store it in the original packaging and plush cradle provided, away from heat. This will allow the breast form to maintain its shape and prevent accidental harm.

Bras

Naturalwear bras feature quality fabrics, components and construction. We recognize that every woman is an individual with unique needs and desires. This is why our wide selection of styles and sizes are specifically designed to incorporate features that accommodate specific needs after breast surgery.

Proper care will prolong the life of Naturalwear bras and provide lasting comfort, security and an overall natural look and feel. We recommend hand washing in warm water with mild soap such as TruKleen. Hang dry for best results. Avoid use of fabric softeners when bra contains CoolMax fabric.

With proper care, your Naturalwear bra will beautifully support and secure your breast form, for a natural, feminine look.



COMFY STRAPS

Shoulder Comfort Pad

C0096 Clear (Qty 20) or N0096 Nude (Qty 20)
C0098 Clear (Qty 60) or N0098 Nude (Qty 60)

- Eliminates strap slippage and eases shoulder discomfort
- Soft, translucent silicone shapes to the shoulder
- Discreet under clothing and easy to apply to bra straps
- Packaged one pair per unit; one size



SECRETS

Breast Enhancers

812 Clear (Qty 1) or 810 Nude (Qty 1)

- Instantly creates fullness and cleavage, without surgery
- Anatomically curved and tapered to hug the breast
- Safe, comfortable and secure method for breast enhancement
- Ideal for underwire, push-up and plunge bras cup sizes B-DD
- Packaged one pair per unit; sizes 1, 2 and 3



LITTLE SECRETS

Breast Enhancers

814 Clear (Qty 1)

- Adds subtle shape and fullness
- Ideal for AA and A cup sizes
- Soft silicone with curved back and tapered edges
- Fits snugly over the breast for natural curve and projection
- Packaged one pair per unit; one size, clear



COVER UPS

Nipple Covers

NC-P Nude (Qty 1)

- Eliminates nipple definition through sheer garments
- Discreetly hides nipples, even without a bra
- Soft adhesive allows for comfortable wear and easy removal
- Packaged one pair per unit; one size

NIPPLES

217L (Qty 1)

- Add distinction and shape
- Can be used on breast forms or natural breasts
- Easy to use; moisten back of nipple and press in place
- Packaged one pair per unit; one size



Breast Form Covers



Bra Pockets



Camisole Inserts



Modesty Inserts



Bra Extenders

BREAST FORM COVERS

- Most available in light and dark tone
- Replacement covers
- Sized to match breast form
- Packaged two per unit

CAMISOLE INSERTS

W94 White or N94 Nude

- Beautiful lace camisole-style bra inserts
- Provides added bra coverage and modesty
- Can be sewn in to neckline of most bras
- Packaged two per unit; one size

BRA EXTENDERS

- Please call Trulife Customer Service for availability

BRA POCKETS

216 White

- Pockets can be sewn into any bra or swimsuit to create a post-mastectomy garment
- Secure snap tape pocket closure to hold breast form in place
- Soft, 100% cotton
- Two per unit, includes two snap strips; sizes 1-10

MODESTY INSERTS

W92 White or N92 Nude

- Provides added bra coverage and modesty
- Can be sewn in to neckline of most bras
- Soft nylon tricot with fiberfill lining
- Packaged 12 per unit; sizes small and large



TRUKLEEN 00008 16 Oz. Bottle

- Recommended to clean Naturalwear bras, breast forms and breast form covers
- Delicate wash suitable for cold and warm water
- Thoroughly cleanses and extends the life of elasticized fabrics
- Six bottles per case

IT STAYS 00005 2 Oz. Bottle

- Water-soluble body adhesive
- Roll-on applicator top
- 12 bottles per case



BREAST FORM SIZING GUIDE

Cup Size	Bra Band Size																			
	AA	Symmetrical	Asymmetrical	28	30	32	34	36	38	40	42	44	46	48	50	52				
	A				28	30	32	34	36	38	40	42	44	46	48	50	52			
	B					28	30	32	34	36	38	40	42	44	46	48	50	52		
	C						28	30	32	34	36	38	40	42	44	46	48	50	52	
	D							30	32	34	36	38	40	42	44	46	48	50	52	
	DD									32	34	36	38	40	42	44	46	48	50	
	DDD											34	36	38	40	42	44	46	48	50

Breast Forms

471 SILK Triangle		X		1	2	3	4	5	6	7	8	9	10	11	12	13	14	15	16	17
472 SILK Triangle Plus		X		1	2	3	4	5	6	7	8	9	10	11	12	13	14	15	16	17
473 SILK Teardrop		X		1	2	3	4	5	6	7	8	9	10	11	12	13	14			
475 SILK A Supreme			X	1	2	3	4	5	6	7	8	9	10	11	12	13	14			
476 SILK Connect		X		1	2	3	4	5	6	7	8	9	10							
477 SILK Flex		X		1	2	3	4	5	6	7	8	9	10	11	12	13	14			
478 SILK XTend			X	1	2	3	4	5	6	7	8	9	10	11	12	13	14			
480 SILK Allure		X			1	2	3	4	5	6	7	8	9	10	11	12	13	14		
481 SILK Ultima Triangle		X		1	2	3	4	5	6	7	8	9	10	11	12	13	14			
482 SILK XTend Plus			X	1	2	3	4	5	6	7	8	9	10	11	12	13	14			
483 SILK Encore Triangle		X		1	2	3	4	5	6	7	8	9	10	11	12	13	14	15	16	17
484 SILK Encore Allure		X			1	2	3	4	5	6	7	8	9	10	11	12	13	14		
490 BodiCool Triangle		X		1	2	3	4	5	6	7	8	9	10	11	12	13	14			
491 BodiCool Oval		X			1	2	3	4	5	6	7	8	9	10	11	12	13	14		
492 BodiCool Encore Triangle		X		1	2	3	4	5	6	7	8	9	10	11	12	13	14			
493 BodiCool Encore Oval		X			1	2	3	4	5	6	7	8	9	10	11	12	13	14		
494 BodiCool Teardrop		X		1	2	3	4	5	6	7	8	9	10	11	12	13	14			
550 Solight		X		1	2	3	4	5	6	7	8	9	10	11	12	13	14	15	16	17
553 Supreme Light		X				3	4	5	6	7	8	9	10	11	12	13	14			
508 Symphony		X			1	2	3	4	5	6	7	8	9	10	11	12	13	14		
528 Symphony Encore		X			1	2	3	4	5	6	7	8	9	10	11	12	13	14		
509 E Supreme		X		1	2	3	4	5	6	7	8	9	10	11	12	13	14	15	16	17
518 Le Coeur		X			1	2	3	4	5	6	7	8	9	10	11	12				
503 A Supreme			X	1	2	3	4	5	6	7	8	9	10	11	12	13	14			

Swim, Leisure & Post-Surgery

640 Calypso Swim Form		X			1	2	3	4	5	6	7	8	9	10	11	12	13	14		
641 Tropez Swim Form		X			1	2	3	4	5	6	7	8	9	10	11	12	13	14		
611 Tri-Leisure		X				3	4	5	6	7	8	9	10	11	12	13	14			
615 Featherweight		X		1	2	3	4	5	6	7	8	9	10	11	12	13	14			
616 Tri-Featherweight		X		1	2	3	4	5	6	7	8	9	10	11	12	13	14			

Partials

531 Evenly You Teardrop		X		Available in sizes 1-11																
533 Evenly You Triangle		X		Available in sizes 3-9																
543 Evenly You Eclipse Plus		X		Available in sizes S, M, L																
545 Evenly You Triangle Plus		X		Available in sizes 3-9																

MARKETING ACCESSORIES

Trulife is dedicated to strengthening our retail and dealer partnerships. We offer exceptional service through expert training, innovative merchandising, informative literature and creative promotions.



BREAST AWARENESS TEACHING AID

00690

- Ideal preventative health breast awareness teaching kit
- Educational breast self-examination brochure
- Includes life-like silicone breast with simulated lumps/nodes

MANNEQUIN

0500

- Naturalwear flesh tone, durable molded mannequin
- Useful training tool for fitters
- For use with 34B bra and appropriate size breast form



BRA TORSO HANGERS

0502

- Sculpted clear plastic torso hanger
- Beautifully displays Naturalwear bras



TAPE MEASURE

00029

- Convenient one-button retractable tape measure
- Ideal for Naturalwear fittings
- Features soft vinyl 60" length (154 cm) tape
- Marked in inches on one side and centimeters on the other

84 VICTORIA, pg. 29

2 rows: 32-36AA
3 rows: 32-40A, 32-40B
4 rows: 34-40C

98 CHELSEA, pg. 28

11 rows: 36-42B, 38-44C, 38-48D

105 EMMA, pg. 32

2 rows: 34-42B
3 rows: 34-38C
4 rows: 40-42C, 34-44D, 34-44DD

140 TERESA, pg. 29

2 rows: 34-38A, 34-38B
3 rows: 40A, 40B, 34-40C

190 IRENE, pg. 32

3 rows: 34-38A, 34-36B
4 rows: 38-42B, 34C
5 rows: 36-46C, 34-48D, 36-46DD

202 MANDY, pg. 33

6 rows: 36A
7 rows: 38A, 36B
8 rows: 38-42B, 36-38C
9 rows: 40-46C, 38-40D, 38DD
10 rows: 42-48D, 40-48DD

210 BARBARA, pg. 23

2 rows: 32-42A, 32-44B
3 rows: 34-52C, 34-36D
4 rows: 38-52D, 34-48DD, 34-48DDD

212 BETHANY, pg. 27

Front:
5 rows: 34-42B, 34-44C, 34-44D
6 rows: 34-44DD
Back:
2 rows: 34-42B
3 rows: 34-44C, 34-36D
4 rows: 38-44D, 34-44DD

215 ELISA, pg. 34

2 rows: 34-42B
3 rows: 34-38C
4 rows: 40-42C, 34-44D, 34-44DD

273 OLIVIA, pg. 21

2 rows: 34-36A, 34-36B, 34-36C, 34-36D
3 rows: 38-40A, 38-40B, 38-40C, 38D

290 ISABEL, pg. 31

3 rows: 34-36B
4 rows: 38-42B, 34C
5 rows: 36-46C, 34-48D, 36-48DD,

297 ROSE, pg. 33

4 rows: 34-42B
5 rows: 34-46C, 36-44D, 36-48DD
36-48DDD
6 rows: 46-48D

326 VIOLET, pg. 37

4 rows: 32/34 A/B, 36/38 A/B, 32/34 C/D
5 rows: 40/42 A/B, 36/38 C/D, 40/42
C/D, 44/46 C/D

327 CHARLOTTE, pg. 37

5 rows: 32/34 A/B, 36/38 A/B
6 rows: 40/42 A/B, 32/34 C/D, 36/38
C/D, 40/42 C/D
7 rows: 44/46 C/D

330 SOPHIA, pg. 38

3 rows: 34-38A, 34-38B, 34-38C, 34-38D
4 rows: 40-44A, 40-44B, 40-44C, 40-44D

331 SARA, pg. 38

5 rows: 34-44A, 34-44B
6 rows: 34-44C, 34-44D

410 KATRINA, pg. 30

2 rows: 34-38AA, 34-38A, 34-38B,
34-36C
3 rows: 40-42A, 40-42B, 38-40C, 34-38D
4 rows: 44B, 42-44C, 40-44D

412 LINDA, pg. 24

2 rows: 32-36A, 32-36B, 34-36C
3 rows: 38-42A, 38-44B, 38-44C, 34-38D

420 KATE, pg. 35

3 rows: 34-40A, 34-42B, 34-38C, 34-38D
4 rows: 44B, 40-44C, 40-48D, 34-48DD,
38-46DDD

422 ELIZABETH, pg. 35

2 rows: 36B
3 rows: 38-40B, 36-40C
4 rows: 42-48B, 42-48C, 36-48D,
36-48DD, 38-48DDD

4001 HANNAH, pg. 24

2 rows: 32-42A, 32-44B, 34-44C
3 rows: 34-44C, 34-44D

4002 LILY, pg. 22

2 rows: 34-40A, 34-40B, 34-40C, 34-38D

4003 CHLOE, pg. 22

2 rows: 34-40A, 34-40B, 34-40C
3 rows: 34-38D

4004 SYDNEY, pg. 26

2 rows: 32-38AA, 32-42A, 32-42B,
34-40C
3 rows: 34-40D

4006 NOELLE, pg. 20

2 rows: 34-42AA, 32-40A, 32-38B,
32-36C
3 rows: 42A, 40-42B, 38-40C, 34-40D

4007 EMILY, pg. 20

2 rows: 34-42A, 34-42B, 34-42C
3 rows: 34-40D

4010 CHRISTINA, pg. 19

2 rows: 32-40AA, 32-40A, 32-40B,
32-40C
3 rows: 34-40D

4015 GABRIELLA, pg. 26

2 rows: 32-42A, 32-44B
3 rows: 34-48C, 34-36D
4 rows: 38-48D, 34-48DD,
34-48DDD

4019 JESSICA, pg. 27

2 rows: 32-42A, 32-44B
3 rows: 34-52C, 34-36D
4 rows: 38-52D, 34-48DD, 34-48DDD

4020 ADDIE, pg. 21

2 rows: 34-38A, 34-40B, 34-40C,
34-40D

4022 CLAIRE, pg. 25

2 rows: 34-40A, 32-40B, 32-40C,
32-38D, 34-38E
3 rows: 42A, 42B, 42C, 40-42D,
40E

4023 ADALYN, pg. 34

2 rows: 34-38A, 34-40B, 34-40C,
34-40D

TERMS

- No minimum order, no handling charges on stock products. \$7.50 minimum charge for non-stock supplies.
- Terms are 2/10 E.O.M. Overdue invoices are subject to a service charge of 1.5% per month on the unpaid balance or \$.50 per month, whichever is greater.
- For Canadian Terms and Policies, please refer to the Canadian Price List.
- All items are F.O.B. shipping points.
- For USA Customers, make checks payable to: Trulife, P.O. Box 89, Jackson, MI 49204-0089
- For Canadian Customers, make checks payable to: Trulife, P.O. Box 459, Trenton, ON K8V 5R6

DAMAGED SHIPMENT POLICY AND PROCEDURE

- Please examine container(s) upon receipt. Note any damage on the delivery bill and have the driver sign it, acknowledging the damage. Contact the delivery service and they will file an insurance claim. Call Trulife Customer Service to arrange for shipment of replacement merchandise.
- Inspect the contents thoroughly upon receipt. If you find shipping damage that was not obvious upon receipt, call the carrier immediately to request an inspection of the container and merchandise. All claims for damage and shortage (container lost in transit) MUST BE MADE WITHIN 10 DAYS OF RECEIPT. If you have any questions call Trulife Customer Service.

RETURN POLICY AND PROCEDURE

- If you need to return an item, please call Trulife Customer Service for a Return Authorization. Credit processing may be delayed if proper authorization is not included with return.
- Merchandise returned without prior authorization will not be accepted.
- When contacting Customer Service, have at hand: date of purchase, invoice number, and reason for return. Once approved, a return authorization number will be given over the phone to put on the outside of the box to ensure your account is credited properly and promptly. Then, ship the box to: Trulife, 2010 E. High Street, Jackson, MI, 49203.
- All returns must be prepaid. If the item is defective, or was shipped in error by Trulife, your account will be credited for the return postage or freight.
- Altered, discontinued, or custom-made items are not returnable.

RETURNS WILL BE ALLOWED UP TO 90 DAYS FROM DATE OF PURCHASE.

- No returns accepted after 90 days. Returns must be in restockable condition. Custom Product may not be returned.

SPECIAL NOTES

- All merchandise leaving our factory has been carefully inspected; please examine it thoroughly as soon as you receive it.
- We have an ongoing goal of product improvement. We reserve the right to alter the product design, specifications and prices without prior notice.

WARRANTY POLICY

- Please contact Trulife Customer Service.

USA

Trulife
2010 E. High Street
Jackson, MI 49203
USA
Tel: +1 800-492-1088
Fax: +1 800-245-3765

IRELAND / INTERNATIONAL

Trulife
3013 Lake Drive
Citywest Business Campus
Dublin 24
Ireland
Tel: +353 1 4511755
Fax: +353 1 4660015

CANADA

Trulife
39 East Davis Street
Trenton, ON K8V 4K8
Canada
Tel: +1 800-267-2812
Fax: +1 613-392-4139

UK

Trulife
41 Amos Road
Meadowhall
Sheffield S9 1BX
UK
Tel: +44 800 716770
Fax: +44 114 2610074

www.trulife.com
www.radiantimpressions.com
www.bodicool.com

